

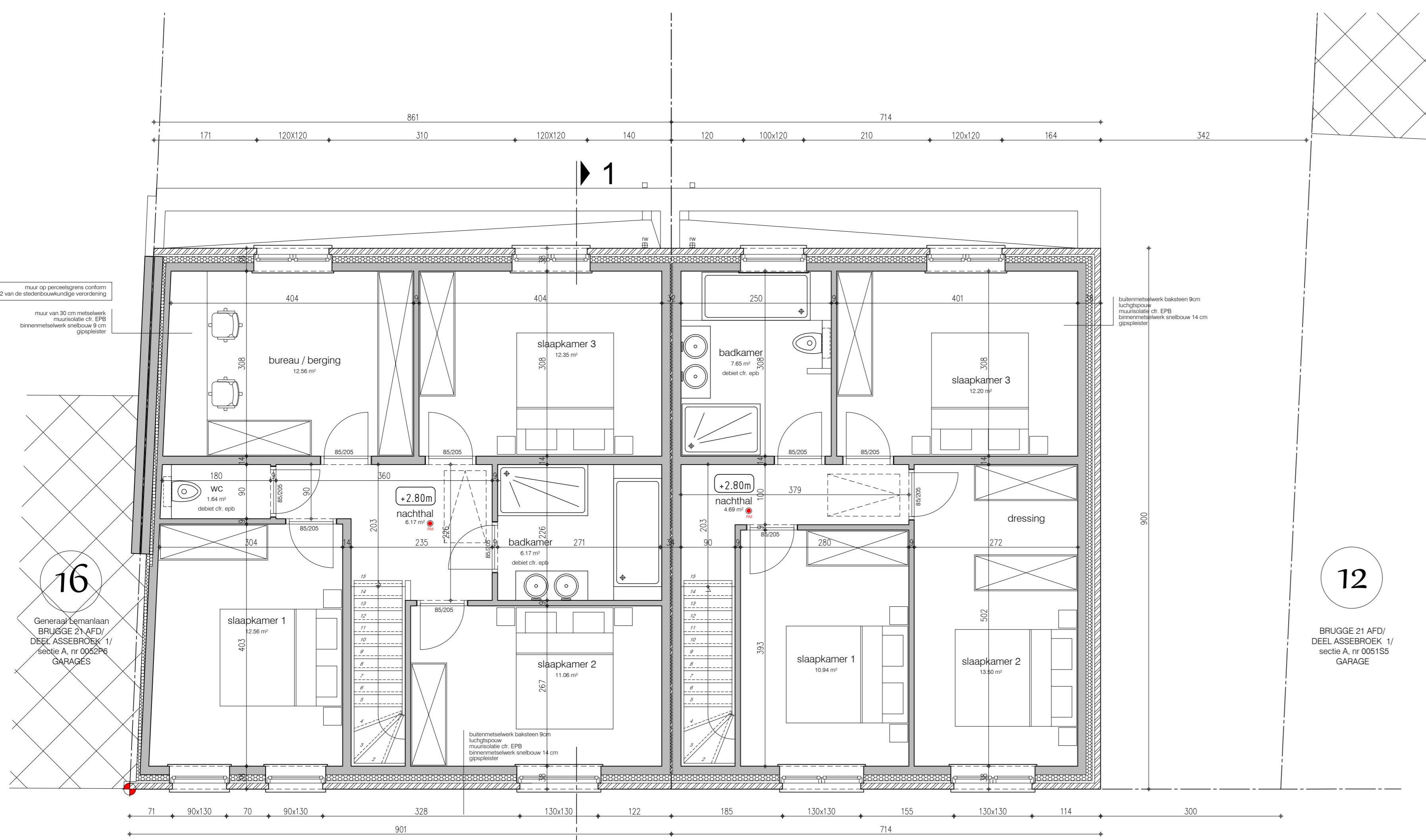
riolerings- en funderingsplan woning 1  
79.26 m<sup>2</sup> bebouwde opp.

riolerings- en funderingsplan woning 2  
64.26 m<sup>2</sup> bebouwde opp.



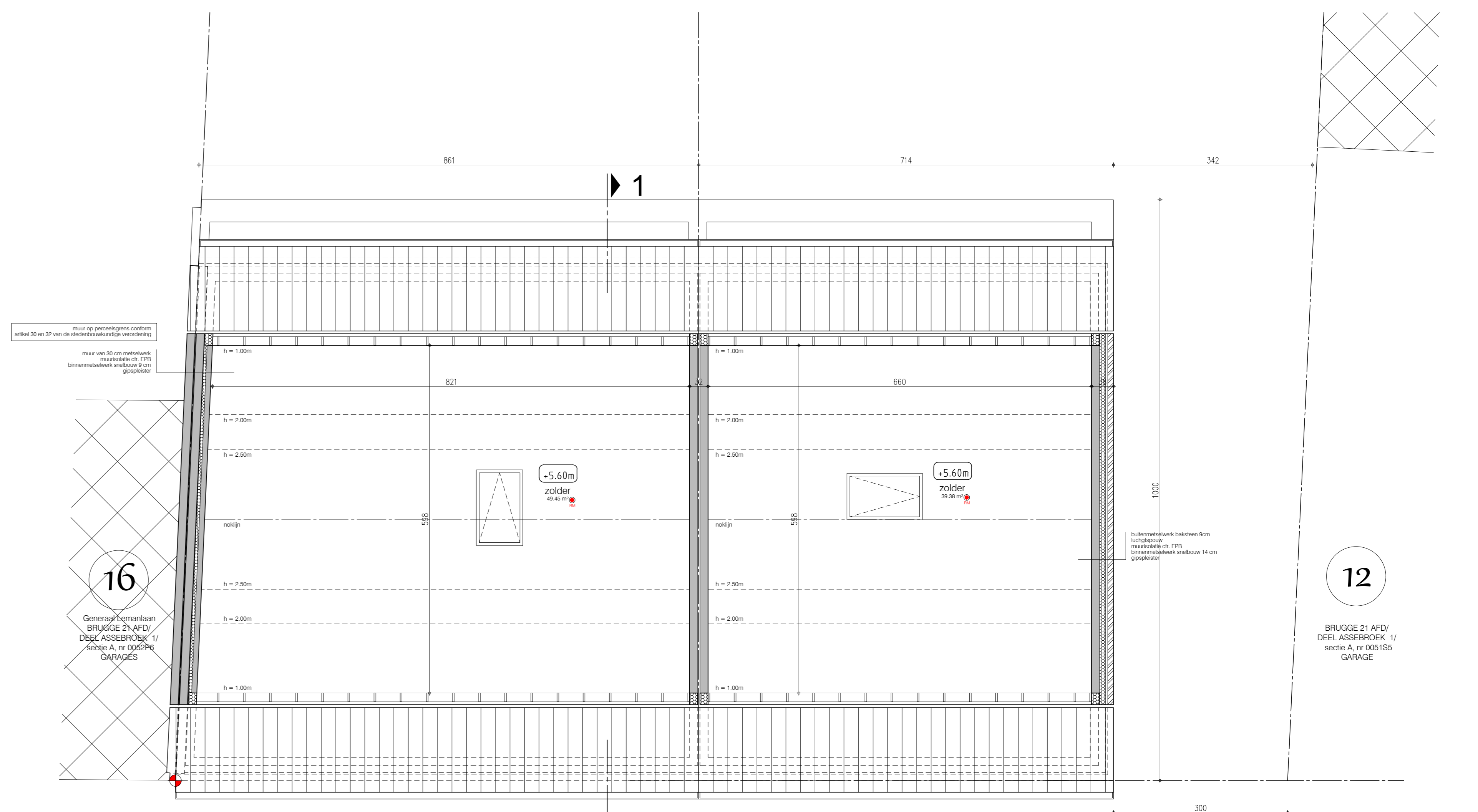
gelijkvloers woning 1  
87.84 m<sup>2</sup> bruto opp.

gelijkvloers woning 2  
71.40 m<sup>2</sup> bruto opp.



1<sup>o</sup> verdieping woning 1  
79.26 m<sup>2</sup> bruto opp.

1<sup>o</sup> verdieping woning 2  
64.26 m<sup>2</sup> bruto opp.



zolder woning 1

zolder woning 2

